

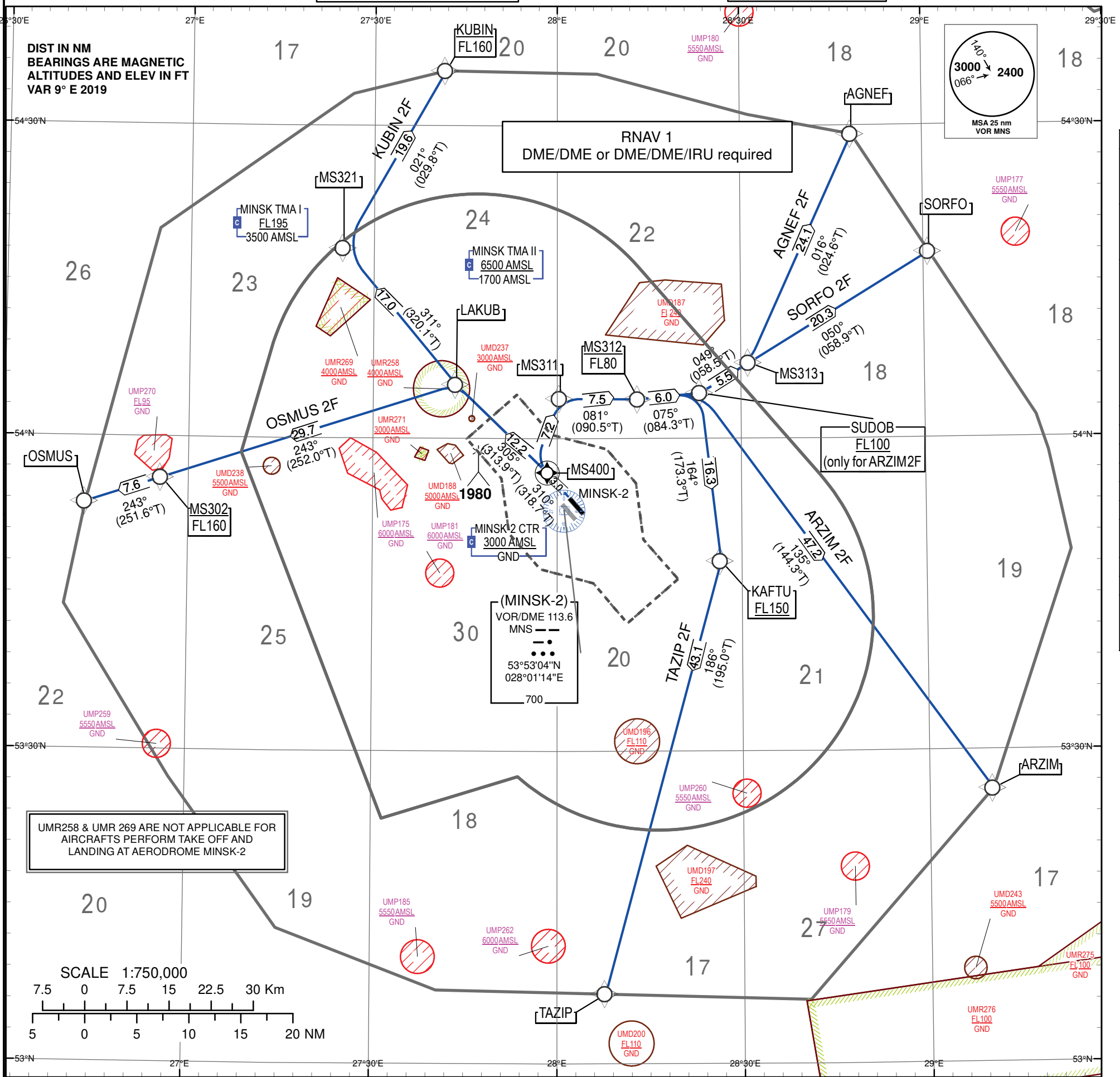
STANDARD DEPARTURE CHART
INSTRUMENT (SID) - ICAO

TRANSITION ALTITUDE
6000

Alt set: - hPa (mm on req)
-QNH (QFE on req)

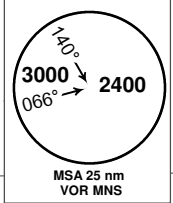
MINSK APP	125.900
MINSK RADAR	125.250
MINSK TOWER	130.400 PRI 118.300 SRY
MINSK-2 ATIS	128.850 EN 135.850 RUS

**MINSK-2
RNAV RWY 31R**
AGNEF2F, ARZIM2F
KUBIN2F, OSMUS2F
SORFO2F, TAZIP2F.



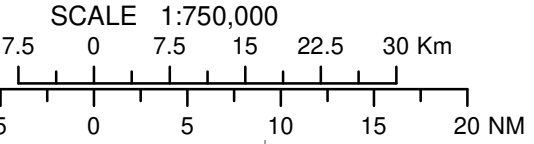
DIST IN NM
BEARINGS ARE MAGNETIC
ALTITUDES AND ELEV IN FT
VAR 9° E 2019

RNAV 1
DME/DME or DME/DME/IRU required



- RNAV 1 APPROVAL REQUIRED. OTHERWISE ADVISE ATC.
- EXPECT DIRECT ROUTING/SHORTCUTS BY ATC WHENEVER POSSIBLE (ESPECIALLY DURING OFF-PEAK HOURS, SEE GEN 4.1 POINT 8).
- INITIAL CLIMB**
CLIMB AND MAINTAIN 6000 FT.
CLIMB TO A HIGHER LEVEL ONLY WHEN CLEARED BY ATC.
- THE MINIMUM CLIMB GRADIENTS ARE AS FOLLOWS** (REQUIRED FOR SEPARATION REASONS):
 - 6.5% FOR SID ARZIM 2F UP TO FL 100;
 - 6.1% FOR SID TAZIP 2F UP TO FL 150;
 - Vmax 230KT FOR SID ARZIM 2F UP TO FL 100.
- WARNING**
IF UNABLE TO COMPLY PDG REPORT AT FIRST CONTACT WITH MINSK GND.
- RADIO COMMUNICATION FAILURE PROCEDURE**
 SET TRANSPONDER TO 7600.
 IF AVAILABLE CALL TELEPHONE NUMBER +375172157600.
 ATTEMPT TO LAND AT THE AERODROME OF DEPARTURE.
 IF UNABLE TO LAND AT THE AERODROME OF DEPARTURE:
 CONTINUE ASSIGNED AND ACKNOWLEDGED SID;
 AFTER REACHING THE LAST ASSIGNED FLIGHT LEVEL, CONTINUE FURTHER CLIMB TO FPL FLIGHT LEVEL IN 3 MINUTES.
- IF BEING VECTORED**
 SET TRANSPONDER TO 7600.
 CONTINUE ON ASSIGNED HEADING AND FLIGHT LEVEL FOR 3 MINUTES, THEN PROCEED DIRECT TO FINAL SID POINT, CLIMBING TO FPL FLIGHT LEVEL.

UMR258 & UMR 269 ARE NOT APPLICABLE FOR AIRCRAFTS PERFORM TAKE OFF AND LANDING AT AERODROME MINSK-2



CHANGE: ADD symbol VOR/DME MNS.

TABULAR DESCRIPTION

AGNEF2F										
Serial Number	Path Descriptor	Waypoint Identifier	Fly - over	Course °M(°T)	Magnetic Variation(°)	Distance NM	Turn Direction	Altitude FT	Speed KT	Navigation Specification
001	CF	MS400	Y	310(318.7)	9	3.0	-	-	-210	RNAV1
002	DF	MS311	-	-	9	7.2	-	-	-	RNAV1
003	TF	MS312	-	081(090.5)	9	7.5	-	-FL80	-230	RNAV1
004	TF	SUDOB	-	075(084.3)	9	6.0	-	-	-250	RNAV1
005	TF	MS313	-	049(058.5)	9	5.5	-	-	-	RNAV1
006	TF	AGNEF	-	016(024.6)	9	24.1	-	-	-	RNAV1
ARZIM2F										
Serial Number	Path Descriptor	Waypoint Identifier	Fly - over	Course °M(°T)	Magnetic Variation(°)	Distance NM	Turn Direction	Altitude FT	Speed KT	Navigation Specification
001	CF	MS400	Y	310(318.7)	9	3.0	-	-	-210	RNAV1
002	DF	MS311	-	-	9	7.2	-	-	-	RNAV1
003	TF	MS312	-	081(090.5)	9	7.5	-	-FL80	-230	RNAV1
004	TF	SUDOB	-	075(084.3)	9	6.0	-	+FL100	-	RNAV1
005	TF	ARZIM	-	135(144.3)	9	47.2	-	-	-250	RNAV1
KUBIN2F										
Serial Number	Path Descriptor	Waypoint Identifier	Fly - over	Course °M(°T)	Magnetic Variation(°)	Distance NM	Turn Direction	Altitude FT	Speed KT	Navigation Specification
001	CF	MS400	Y	310(318.7)	9	3.0	-	-	-210	RNAV1
002	TF	LAKUB	-	305(313.9)	9	12.2	-	-	-250	RNAV1
003	TF	MS321	-	311(320.1)	9	17.0	-	-	-	RNAV1
004	TF	KUBIN	-	021(029.8)	9	19.6	-	-FL160	-	RNAV1
OSMUS2F										
Serial Number	Path Descriptor	Waypoint Identifier	Fly - over	Course °M(°T)	Magnetic Variation(°)	Distance NM	Turn Direction	Altitude FT	Speed KT	Navigation Specification
001	CF	MS400	Y	310(318.7)	9	3.0	-	-	-210	RNAV1
002	TF	LAKUB	-	305(313.9)	9	12.2	-	-	-25	RNAV1
003	TF	MS302	-	243(251.8)	9	29.7	-	-FL160	-	RNAV1
004	TF	OSMUS	-	243(251.6)	9	7.6	-	-	-	RNAV1
SORFO2F										
Serial Number	Path Descriptor	Waypoint Identifier	Fly - over	Course °M(°T)	Magnetic Variation(°)	Distance NM	Turn Direction	Altitude FT	Speed KT	Navigation Specification
001	CF	MS400	Y	310(318.7)	9	3.0	-	-	-210	RNAV1
002	DF	MS311	-	-	9	7.2	-	-	-	RNAV1
003	TF	MS312	-	081(090.5)	9	7.5	-	-FL80	-230	RNAV1
004	TF	SUDOB	-	075(084.3)	9	6.0	-	-	-250	RNAV1
005	TF	MS313	-	049(058.5)	9	5.5	-	-	-	RNAV1
006	TF	SORFO	-	050(058.9)	9	20.3	-	-	-	RNAV1
TAZIP2F										
Serial Number	Path Descriptor	Waypoint Identifier	Fly - over	Course °M(°T)	Magnetic Variation(°)	Distance NM	Turn Direction	Altitude FT	Speed KT	Navigation Specification
001	CF	MS400	Y	310(318.7)	9	3.0	-	-	-210	RNAV1
002	DF	MS311	-	-	9	7.2	-	-	-	RNAV1
003	TF	MS312	-	081(090.5)	9	7.5	-	-FL80	-230	RNAV1
004	TF	SUDOB	-	075(084.3)	9	6.0	-	-	-250	RNAV1
005	TF	KAFTU	-	164(173.3)	9	16.3	-	+FL150	-	RNAV1
006	TF	TAZIP	-	186(195.0)	9	43.1	-	-	-	RNAV1

STANDARD DEPARTURE CHART
INSTRUMENT (SID) – ICAO

WAYPOINT LIST

Waypoint Identifier	Coordinates	
AGNEF	542909.0N	0284822.0E
ARZIM	532614.0N	0291013.0E
DUZIK	541844.3N	0275718.9E
GIFLI	534705.9N	0285644.0E
AFTU	534814.6N	0282637.0E
KUBIN	543517.0N	0274141.0E
LAKUB	540511.0N	0274333.0E
MS302	535604.6N	0265537.3E
MS311	540349.9N	0280030.3E
MS312	540346.9N	0281315.4E
MS313	540715.6N	0283120.6E
MS321	541814.1N	0272501.3E
MS400	535643.9N	0275824.0E
OSMUS	535341.0N	0264321.0E
SORFO	541749.0N	0290055.0E
SUDOB	540423.0N	0282323.0E
AZIP	530643.0N	0280749.0E

THIS PAGE INTENTIONALLY LEFT BLANK